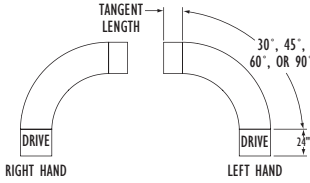


Model 190-NSPC

- 12 Bed Widths
- Slave Driven from Model 190-NSP
- Adjustable MS-Type Floor Supports Available



The 190 Spool Curves and Spurs are designed to be slave driven from the 190-NSP Conveyor. Curves are used where turns in the conveyor line are necessary. Spurs are used in diverging and converging applications.

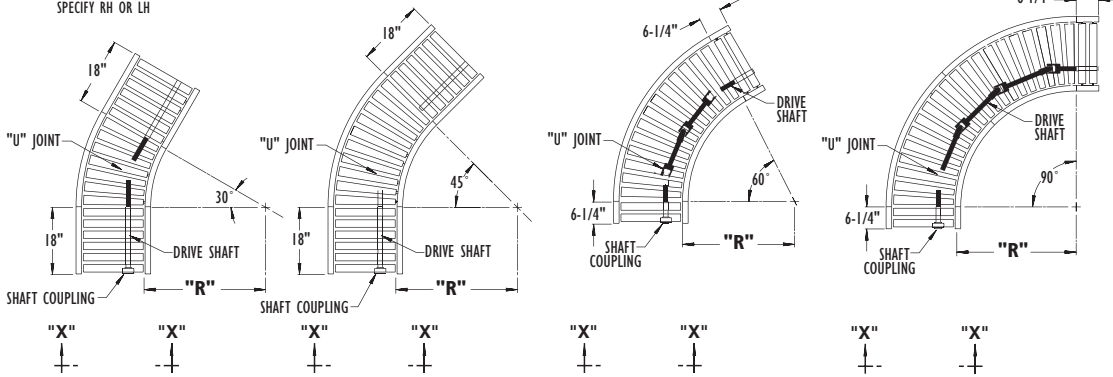


• CURVE WITH OPTIONAL DRIVE SPECIFY RH OR LH

Between Rail Width	Overall Frame Width	"R"	Total Number of Rollers*				WEIGHTS (Lbs.)			
			90°	60°	45°	30°	90°	60°	45°	30°
13"	16"	24"	16T/4S	10T/4S	8T/12S	5T/12S	179	144	157	132
15"	18"	32 1/2"	20T/4S	12T/4S	10T/12S	6T/12S	222	184	183	151
17"	20"						235	197	192	158
19"	22"						248	209	202	165
21"	24"						259	224	211	173
23"	26"						281	233	222	181
25"	28"						285	246	231	189
27"	30"	299	258	241	199					
31"	34"	48"	28T/4S	20T/4S	14T/12S	10T/12S	437	338	313	247
33"	36"						452	353	326	259
37"	40"						484	380	349	271
39"	42"						503	395	361	285

All weights in catalog are conveyor weights only. Accessories, crating, etc., are not included.

*T = TAPERED
S = STRAIGHT



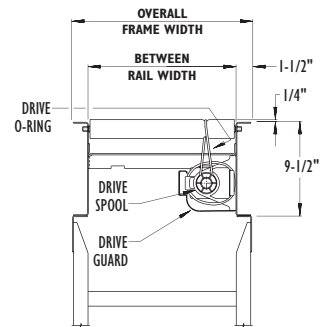
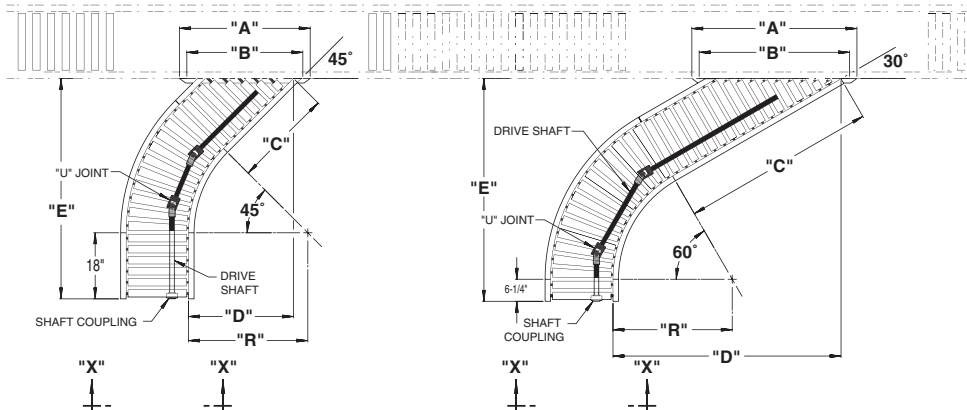
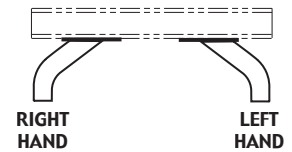
NOTE: DARK SHAFT INDICATES POSITIVE DRIVE SPOOLS.

Model 190-NSPS

Between Rail Width	Overall Frame Width	"R"	"A"		"B"		"C"		"D"		"E"		Number of Rollers*	WEIGHTS (Lbs.)		
			45°	30°	45°	30°	45°	30°	45°	30°	45°	30°		45°	30°	
13"	16"	24"	29"	38"	27"	36"	21"	30"	21 7/8"	38"	50"	42 1/4"	8T/12S	10T/11S	173	176
15"	18"	32 1/2"	32"	41"	30"	39"	36"	54"	35"	63"	66 5/8"	61 5/8"	10T/17S	12T/19S	230	263
17"	20"		35"	47"	33"	45"									240	274
19"	22"		38"	50"	36"	48"									250	283
21"	24"		41"	53"	39"	51"									259	293
23"	26"		44"	56"	42"	54"									268	303
25"	28"		47"	62"	45"	60"									280	316
27"	30"	50"	65"	48"	63"	288	325									
31"	34"	48"	56"	74"	54"	72"	48"	75"	48"	89"	86"	85 1/2"	14T/21S	20T/26S	410	499
33"	36"		59"	77"	57"	75"									422	513
37"	40"		65"	86"	63"	84"									446	540
39"	42"		68"	89"	66"	87"									457	553

All weights in catalog are conveyor weights only. Accessories, crating, etc., are not included.

*T = TAPERED
S = STRAIGHT

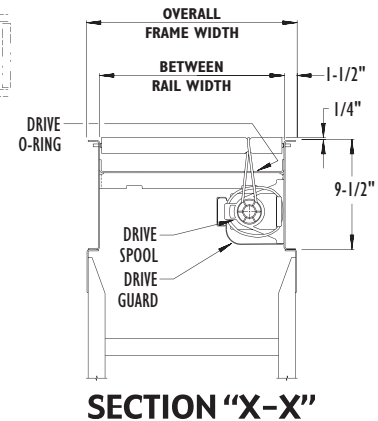
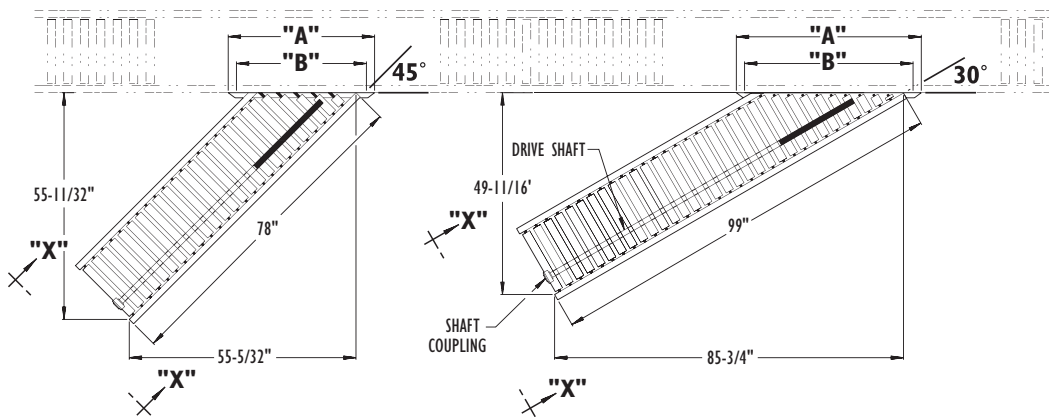


SECTION "X-X"

NOTE: DARK SHAFT INDICATES POSITIVE DRIVE SPOOLS.

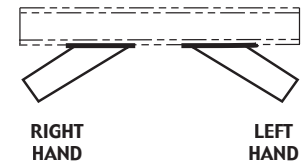
LIVEROLLER

Model 190-NSPSS



NOTE: DARK SHAFT INDICATES POSITIVE DRIVE SPOOLS.

Between Rail Width	Overall Frame Width	"A"		"B"		WEIGHTS (Lbs.)	
		45°	30°	45°	30°	45°	30°
13"	16"	29"	38"	27"	36"	177	224
15"	18"	32"	41"	30"	39"	184	233
17"	20"	35"	47"	33"	45"	191	241
19"	22"	38"	50"	36"	48"	198	249
21"	24"	41"	53"	39"	51"	204	256
23"	26"	44"	56"	42"	54"	210	262
25"	28"	47"	62"	45"	60"	219	272
27"	30"	50"	65"	48"	63"	225	278
31"	34"	56"	74"	54"	72"	237	290
33"	36"	59"	77"	57"	75"	242	296
37"	40"	65"	86"	63"	84"	253	306
39"	42"	68"	89"	66"	87"	256	310



LOAD CAPACITY CHART					
Overall Frame Width	190-NSPC Capacity Per Curve (Lbs.)	190-NSPS Capacity Per Spur (Lbs.)		190-NSPSS Capacity Per St. Spur (Lbs.)	
		45°	30°	45°	30°
16"	240	300	285	375	480
18" to 30"	300	405	435		
34" to 42"	450	540	720		

All weights in catalog are conveyor weights only. Accessories, crating, etc., are not included.

• Standard Specifications

BED-Roller bed with 2-1/2 in. dia. tapered to 1-11/16 in. dia. x 16 ga. galvanized and 1.9 in. dia. roller x 16 ga. galvanized tube. Mounted in 9-1/2 in. x 12 ga. powder painted formed steel channel frame.

SLAVE DRIVEN-Curves and spurs are slave driven from drive shaft of Model 190-NSP conveyor. Shafts are coupled by chain coupling at bed joints.

DRIVE SHAFT-1 in. dia. steel shaft extends full length of conveyor, coupled with universal joints (U joints) at necessary intervals.

DRIVE SPOOLS-2 in. dia. Delrin spool held in place on drive shaft with spool spacers.

DRIVE GUARD-Underside of drive shaft with spools and drive o-rings guarded full length of conveyor.

DRIVE O-RING-3/16 in. dia. polyurethane o-ring from drive spool to tread roller.

BEARINGS-Sealed, pre-lubricated, self-aligning, ball bearings with eccentric lock collar on drive shaft. Pre-lubricated ball bearings in tread rollers.

SPLICE PLATES-Standard for connecting to 190-NSP.

CAPACITY-See Load Capacity Chart.

FLOOR SUPPORTS-Now supplied as optional equipment.

• Optional Equipment

FLOOR SUPPORTS-MS Type floor supports are available with a wide range of adjustment. Specify top of belt or roller elevation. One support required at every bed joint and ends of conveyor. Holes in feet for lagging to floor. Knee braces recommended above MS-6 support.

CONVEYING SPEED-Other constant and variable speeds from 30 to 120 FPM. Over 120 FPM timing belt drive recommended. Capacity affected with speed change.

DRIVE-24 in. long drive section replaces standard 6-1/4 in. or 18 in. tangent on end of 190-NSPC or 190-NSPS. No change on 190-NSPSS. Specify RH or LH.

GUARD RAILS-Adjustable Universal Channel Guard Rail, fixed channel or type A or B angle. NOTE: If product comes in contact with guard rails, product flow will be affected.

POLY-TIER SUPPORTS-36 in. to 120 in. support heights in 6 in. increments. Knee braces supplied.

CEILING HANGERS-5/8 in. dia. x 8 ft. long unplated rods fully threaded. Other lengths and galvanized rods available.

OPTIONAL TANGENTS-Available in 3 in. increments up thru 48 in. long.

Our Vision: To be the finest conveyor distributor in the hearts and minds of the people we serve.

McKESOCK ENGINEERING Ltd.

7-138 Anderson Avenue, Markham, L6E 1A4
Phone: 905-471-0420, Fax: 905-471-6617
Email: sales@mckessockconveyors.com
www.mckessockconveyors.com

