

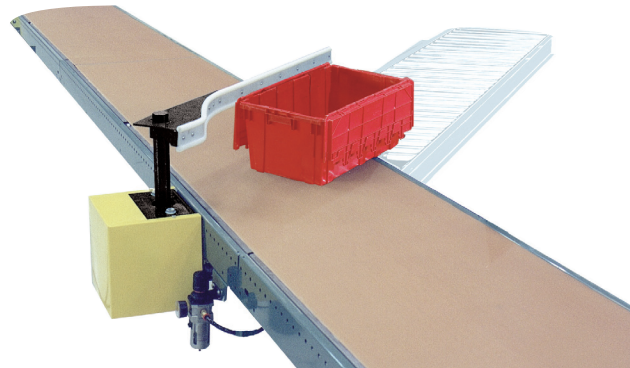
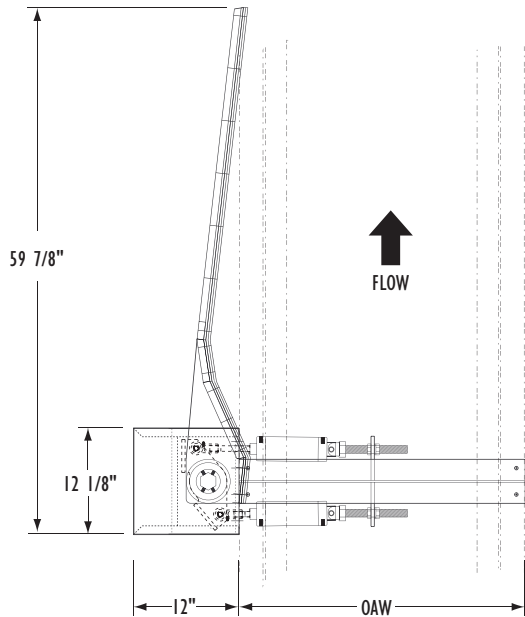
Conveyor Accessories



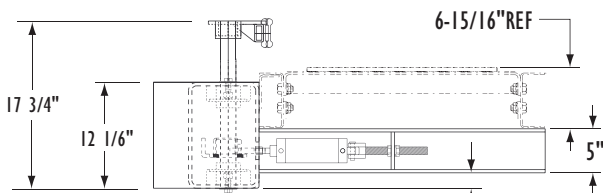
ProSort 45 Pivoting Bow Arm Sorter

The ProSort 45 is a precisely timed bow arm diverter designed for use with the Model SB belt conveyor. The bow is specifically designed for diverting totes onto powered spurs.

- Right hand or left hand diverts available
- Up to 40 cartons per minute



OAW
18"
24"
30"
36"



• Right Hand Divert Shown

Application Note: The ProSort 45 is specifically designed to be used with the Model SB belt conveyor fitted with the following options: tan glidetop belt, variable speed drive, 2-1/4 in. infeed tail pulley, shaft encoder, heavy duty drive and high speed bearings (contact factory). The recommended belt speed is 300 FPM with a minimum of 7'6" from leading edge to leading edge of totes. The maximum tote length is 24 in.

- PAINT—Powder painted black only with yellow guards
- CAPACITY—1 lb. minimum carton weight, 50 lb. maximum carton weight, 36 in. maximum carton length, 1 in. minimum carton height.
- CYCLE RATE—Up to 40 cycles per minute.
- RIGHT HAND OR LEFT HAND DIVERTS—Please specify
- AIR VALVE—120 volt AC single solenoid air valve.
- BOW ARM—Tubular steel construction with dogbone wearstrip face.

- AIR FILTER, REGULATOR—Supplied with safety shut off valve, 1/2 inch NPT inlet port.
- AIR CYLINDER—Two 2-1/2 in. bore x 4 in. stroke.
- AIR REQUIREMENTS—80 P.S.I. working pressure, free air consumption at 80 psi—0.14 cubic feet per cycle. Note: Include safety factor when calculating compressor size. (1-1/4 in. minimum air supply line recommended).

• Optional Equipment

- AIR VALVE—24 volt DC single solenoid valve.