

HYTROL CONVEYOR COMPANY, INC.

Model **SB** Horizontal Belt Conveyor (Slider Bed)

The Model SB is a slider bed conveyor designed with channel frames and bolt in pans. Frame design makes it ideal for matching up with roller bed conveyors.

- 15 Belt Widths
- Center Drive
- Reversible
- System Ends
- Pop-Out Roller
- Adjustable MS-Type Floor Supports Available



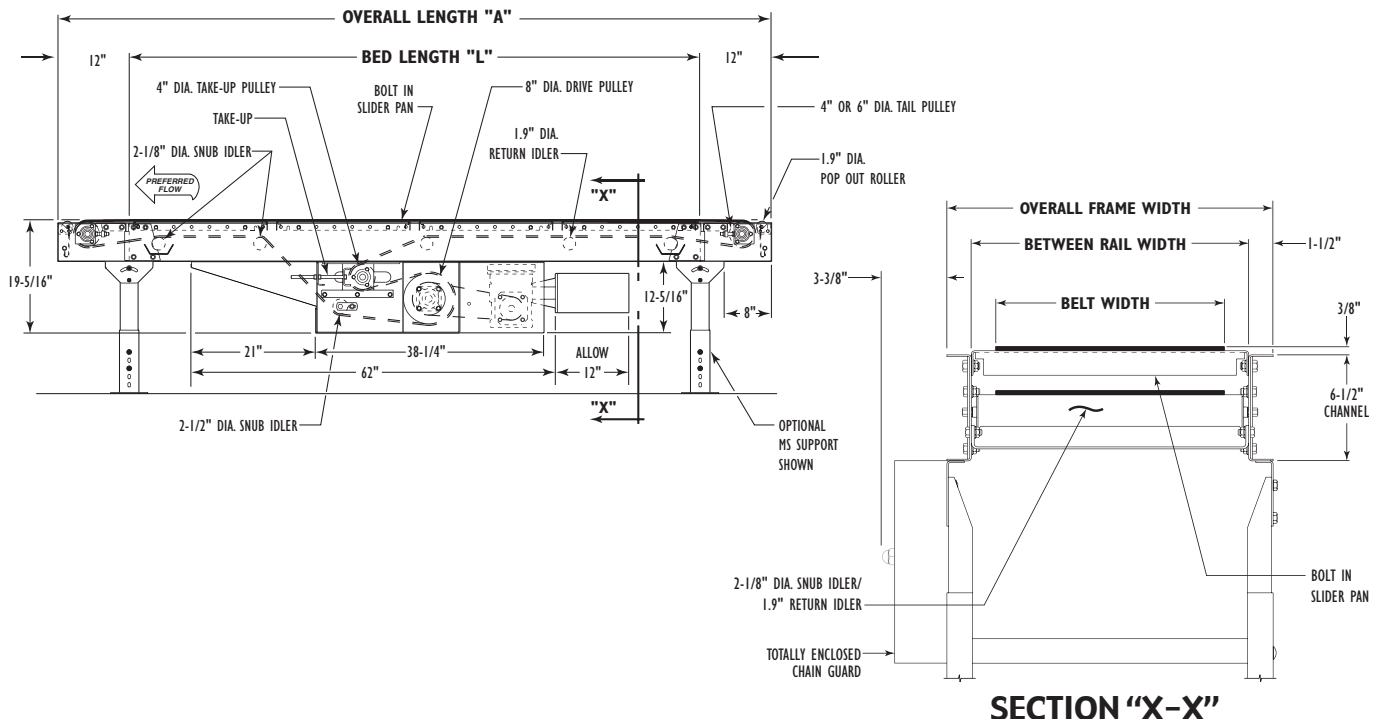
Conveyor shown with optional floor supports



SLIDER BED

| SIZE TO ORDER Overall Length "A" 4" Dia. Pulley | Bed Length "L" | Belt Width | | | | | | | | SIZE TO ORDER Overall Length "A" 6" Dia. Pulley | | | | | | | | |
|--|----------------|--------------------|------|------|------|------|------|------|------|--|------|------|------|------|------|------|------|-----|
| | | 10" | 12" | 14" | 16" | 18" | 20" | 22" | 24" | | 28" | 30" | 34" | 36" | 42" | 48" | 54" | |
| | | Between Rail Width | 13" | 15" | 17" | 19" | 21" | 23" | 25" | | 27" | 31" | 33" | 37" | 39" | 45" | 51" | 57" |
| Overall Frame Width | 16" | 18" | 20" | 22" | 24" | 26" | 28" | 30" | 34" | 36" | 40" | 42" | 48" | 54" | 60" | | | |
| 12' | 10' | 561 | 593 | 625 | 657 | 689 | 721 | 753 | 12' | 791 | 865 | 940 | 1014 | 1088 | 1162 | 1237 | 1312 | |
| 17' | 15' | 660 | 696 | 732 | 768 | 804 | 840 | 876 | 17' | 919 | 1002 | 1085 | 1167 | 1250 | 1333 | 1415 | 1497 | |
| 22' | 20' | 760 | 800 | 840 | 880 | 920 | 960 | 1000 | 22' | 1047 | 1138 | 1230 | 1321 | 1412 | 1503 | 1594 | 1682 | |
| 27' | 25' | 859 | 903 | 947 | 991 | 1035 | 1079 | 1123 | 27' | 1175 | 1275 | 1375 | 1474 | 1574 | 1673 | 1773 | 1867 | |
| 32' | 30' | 959 | 1007 | 1054 | 1102 | 1150 | 1198 | 1246 | 32' | 1304 | 1412 | 1520 | 1627 | 1735 | 1844 | 1952 | 2052 | |
| 37' | 35' | 1058 | 1110 | 1162 | 1214 | 1266 | 1317 | 1369 | 37' | 1432 | 1548 | 1665 | 1781 | 1897 | 2014 | 2130 | 2237 | |
| 42' | 40' | 1158 | 1213 | 1269 | 1325 | 1381 | 1437 | 1492 | 42' | 1560 | 1685 | 1810 | 1934 | 2059 | 2184 | 2309 | 2422 | |
| 47' | 45' | 1257 | 1317 | 1377 | 1436 | 1496 | 1556 | 1616 | 47' | 1688 | 1821 | 1955 | 2088 | 2221 | 2355 | 2488 | 2607 | |
| 52' | 50' | 1357 | 1420 | 1484 | 1548 | 1612 | 1675 | 1739 | 52' | 1816 | 1958 | 2100 | 2241 | 2383 | 2525 | 2667 | 2792 | |
| 57' | 55' | 1456 | 1524 | 1592 | 1659 | 1727 | 1794 | 1862 | 57' | 1944 | 2094 | 2245 | 2395 | 2545 | 2695 | 2845 | 2977 | |
| 62' | 60' | 1556 | 1627 | 1699 | 1771 | 1842 | 1914 | 1985 | 62' | 2072 | 2231 | 2390 | 2548 | 2707 | 2865 | 3024 | 3162 | |
| 67' | 65' | 1655 | 1731 | 1806 | 1882 | 1957 | 2033 | 2109 | 67' | 2200 | 2367 | 2535 | 2702 | 2869 | 3036 | 3203 | 3347 | |
| 72' | 70' | 1755 | 1834 | 1914 | 1993 | 2073 | 2152 | 2232 | 72' | 2328 | 2504 | 2680 | 2855 | 3031 | 3206 | 3382 | 3532 | |
| 77' | 75' | 1854 | 1938 | 2021 | 2105 | 2188 | 2272 | 2355 | 77' | 2456 | 2640 | 2825 | 3009 | 3193 | 3376 | 3560 | 3717 | |
| 82' | 80' | 1954 | 2041 | 2129 | 2216 | 2303 | 2391 | 2478 | 82' | 2585 | 2777 | 2970 | 3162 | 3354 | 3547 | 3739 | 3902 | |
| 87' | 85' | 2053 | 2145 | 2236 | 2327 | 2419 | 2510 | 2601 | 87' | 2713 | 2914 | 3115 | 3315 | 3516 | 3717 | 3918 | 4087 | |
| 92' | 90' | 2153 | 2248 | 2343 | 2439 | 2534 | 2629 | 2725 | 92' | 2841 | 3050 | 3260 | 3469 | 3678 | 3887 | 4097 | 4272 | |
| 97' | 95' | 2252 | 2352 | 2451 | 2550 | 2649 | 2749 | 2848 | 97' | 2969 | 3187 | 3405 | 3622 | 3840 | 4058 | 4275 | 4457 | |
| 102' | 100' | 2352 | 2455 | 2558 | 2662 | 2765 | 2868 | 2971 | 102' | 3097 | 3323 | 3550 | 3776 | 4002 | 4228 | 4454 | 4642 | |

All weights in catalog are CONVEYOR WEIGHTS ONLY. Accessories, crating, etc., are not included.



SECTION "X-X"

• Standard Specifications

BELT–Ultimate 140 BBS–Nitrile.

BED–12 ga. galvanized slider pan mounted in 6–1/2 in. x 12 ga. powder painted formed steel channel frame bolted together with splice plates.

CENTER DRIVE–Provides 16 in. of belt take–up. Minimum elevation–19–1/2 in. Specify location. Minimum OAL without modification–120 in. Chain guard located on left hand side.

DRIVE PULLEY–8 in. dia. with 1–3/16 in. dia. shaft at bearings, machine crowned and fully lagged.

TAIL PULLEY–4 in. dia. with 1 in. dia. shaft at bearings or 6 in. dia. with 1–3/16 in. dia. shaft at bearings, machine crowned.

SNUB IDLER–Adjustable 2–1/8 in. dia. pre–lubricated ball bearings. Guards included.

RETURN IDLER–Adjustable 1.9 in. dia. pre–lubricated ball bearings.

TAKE–UP–Take–up in center drive provides 16 in. of belt take–up.

BEARINGS–Sealed, pre–lubricated, self–aligning, ball bearings on drive and tail pulleys.

SPEED REDUCTION–Sealed worm gear C–Face speed reducer. No. 50 roller chain to drive pulley.

MOTOR–1 HP–208/230/460/575V–3 Ph.–60 Hz. Totally Enclosed C–Face.

BELT SPEED–Constant 65 FPM.

CAPACITY–Maximum load per linear foot of conveyor 100 lbs. NOT TO EXCEED capacity in charts.

FLOOR SUPPORTS–Now supplied as optional equipment.

| 8" DIA. DRIVE PULLEY HORIZONTAL LIVE LOAD CAPACITY @ 65 FPM | | | |
|---|----------------|---------------|------|
| HP | BELT WIDTHS TO | LENGTHS UP TO | |
| | | 52' | 102' |
| DISTRIBUTED LOAD (LBS.) | | | |
| 1 | 14" | 920 | 870 |
| | 24" | 890 | 820 |
| | 36" | 820 | 720 |
| | 48" | 770 | 770 |
| | 54" | 500 | 300 |
| 2 | 14" | 1920 | 1870 |
| | 24" | 1890 | 1820 |
| | 36" | 1820 | 1730 |
| | 48" | 1770 | 1650 |
| | 54" | 1200 | 1050 |

• Optional Equipment

FLOOR SUPPORTS–MS Type floor supports are available with a wide range of adjustment. Specify top of belt or roller elevation. One support required at every bed joint and ends of conveyor. Holes in feet for lagging to floor. Knee braces recommended above MS–6 support.

BELT*–White Polymate 100 RMP–COS (cover one side), Black Trackmate 533 COS–PVC, Tan Glidetop.

BELT SPEED*–Other constant and variable speeds. V–belt drive supplied on speeds under 17 FPM.

END DRIVE–8 in. end drive mounted on end of unit. Requires underside take–up.

LOW ELEVATION SIDE MOUNTED CENTER DRIVE–Motor reducer unit mounted to side of conveyor. Minimum elevation 16–1/2 in.

V–BELT DRIVE–V–Belt supplied between motor and reducer. Minimum overall drive width 14 in.

O–RING DRIVE CHAIN–With sealed in lubricant (Recommended for applications that do not permit regular lubrication).

GUARD RAILS–Adjustable Universal Channel Guard Rail, fixed channel, type A & B angle. Fixed Channel overlapping, one direction. Fixed Channel non–overlapping, reversing. See Accessory section.

PULLEYS–6 in. tail pulley with 1–3/16 in. dia. shaft at bearings in place of 4 in. when not furnished as standard.

CASTERS–See Accessory section.

POLY–TIER SUPPORTS–36 in. to 120 in. support heights in 6 in. increments. Knee braces supplied.

CEILING HANGERS–5/8 in. dia. x 8 ft. long unplated rods fully threaded. Other lengths and galvanized rods available.

MOTORS–Energy efficient, single phase, brakemotor, other characteristics. 2 HP maximum.

ELECTRICAL CONTROLS–One direction manual start switch, reverse drum switch, non–reversing and reversible magnetic starters, push button stations. AC variable frequency drive.

* NOTE: Capacity affected with these options.