

3000LB. CAPACITY TURNTABLE
The Model LPTG Turntable Gravity Conveyor Turntable with transition can be used in a pass thru conveyor line. The transition section can be reconfigured to make a 90° turns at the intersection of two gravity conveyor lines.



LPTG19

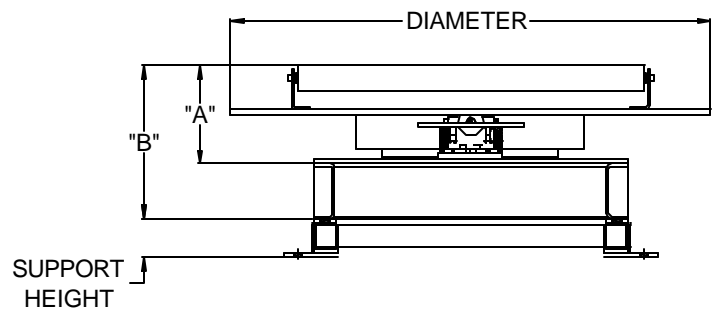
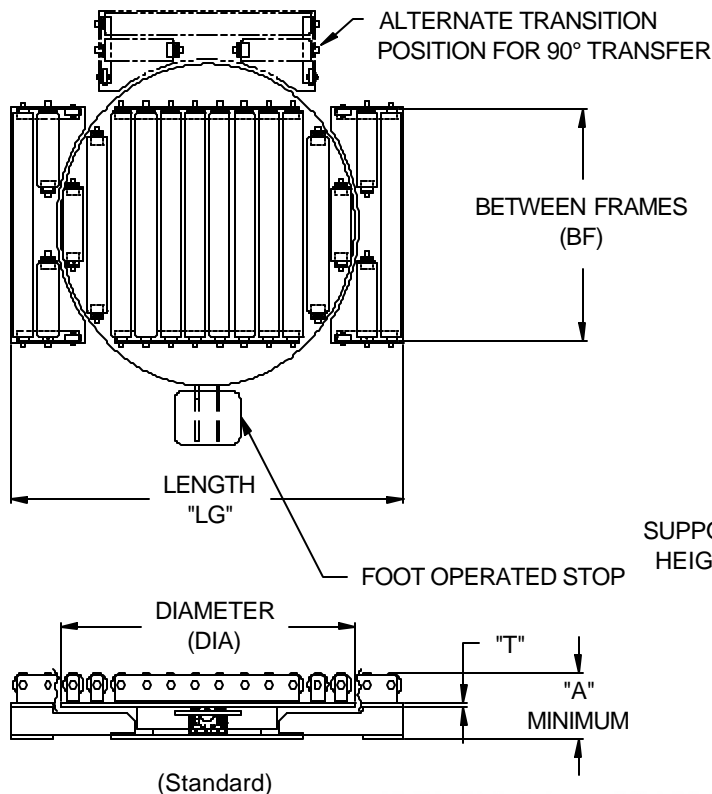
STANDARD SPECIFICATIONS

Diameters: 36", 42", 48", 54", 60" and 72".
Base: 3/8" thick steel plate.
Top: Standard gravity roller in a set high 3/16" formed steel angle frame mounted on a round steel plate. Transition roller section is set for pass thru product transfer and can be moved for 90° transfer.
Center Bearing: Slewing Ring.
Stop: Standard foot operated stop for 90° indexing
Rollers: 1.9" dia., 12 ga. wall tubes with 7/16" hex cold rolled steel axles, spring retained. Standard A20 bearings are light oil lubricated. 260lbs. roller capacity.
Capacity: Up to 3000 lb evenly distributed
Supports: None for Dim "A" Minimum Elevation. Base frame weldment only for elevations greater than Dim "A" up to Dim "B". SPHH Style supports with base frame weldment for elevations above Dim "B".
Rollers Covers: Standard V98; No Roll Cover
Finish: Standard P94; Safety Blue, Epoxy Powder Coat.

LPTG25

STANDARD SPECIFICATIONS

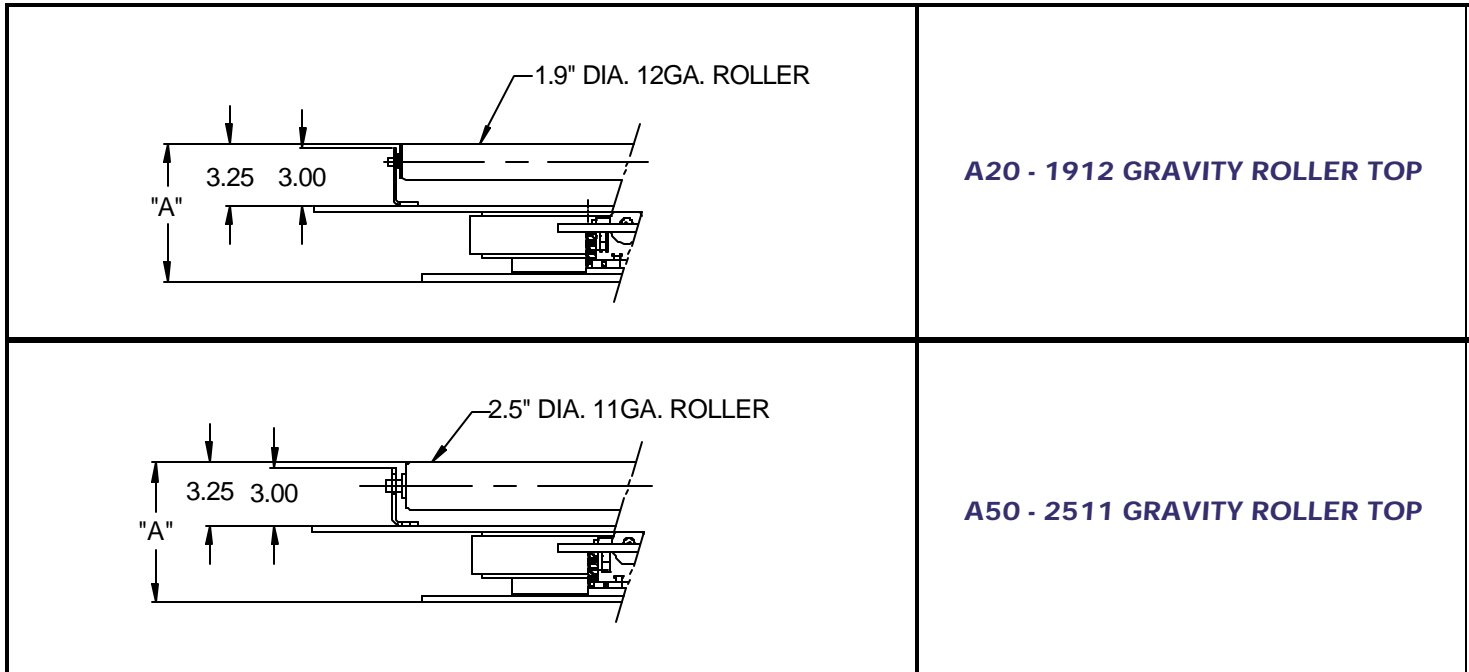
Diameters: 36", 42", 48", 54", 60" and 72".
Base: 3/8" thick steel plate.
Top: Standard gravity roller in a set high 3/16" formed steel angle frame mounted on a round steel plate. Transition roller section is set for pass thru product transfer and can be moved for 90° transfer.
Center Bearing: Slewing Ring.
Stop: Standard foot operated stop for 90° indexing
Rollers: 2.5" dia., 11 ga. wall tubes with 11/16" hex cold rolled steel axle, spring retained. Standard A50 bearings are light oil lubricated. 750 lbs. roller capacity.
Capacity: Up to 3000 lb evenly distributed
Supports: None for Dim "A" Minimum Elevation. Base frame weldment only for elevations greater than Dim "A" up to Dim "B". SPHH Style supports with base frame weldment for elevations above Dim "B".
Rollers Covers: Standard V98; No Roll Cover
Finish: Standard P94; Safety Blue, Epoxy Powder Coat.



(Shown with optional base frame weldment and supports)

Our Vision: To be the finest conveyor distributor in the hearts and minds of the people we serve.

DIAMETER (DIA)	Top "T"	"A"	"B"	BETWEEN FRAMES (BF)	ROLLER QUANTITY	LENGTH "LG"
36	.50	7.375	11.375	26.00	8	48.00
42	.50	7.375	11.375	29.00	10	54.00
48	.50	7.375	11.375	32.00	12	60.00
54	.75	7.625	11.625	39.00	12	66.00
54	.75	7.625	11.625	29.00	14	66.00
60	.75	7.625	11.625	43.00	14	72.00
60	.75	7.625	11.625	32.00	16	72.00
60	.75	7.625	11.625	26.00	18	72.00
72	.75	7.625	11.625	49.00	18	84.00
72	.75	7.625	11.625	39.00	18	84.00
72	.75	7.625	11.625	29.00	22	84.00



A20 - 1912 GRAVITY ROLLER TOP

A50 - 2511 GRAVITY ROLLER TOP

LPTG19

LPTG25

OPTIONAL COMPONENTS

OPTIONAL COMPONENTS

ROLLER BEARING	A20; A21, A22, A23,
ROLL COVER	V98; V41, V70,
FINISH	P94; P09, P11, P24, P45, P95

ROLLER BEARING	A50; A51, A52, A53, A54 A55, A60, A63
ROLL COVER	V98; V42, V73,
FINISH	P94; P09, P11, P24, P45, P95

*For descriptions of OPTIONAL COMPONENTS see pages 169-175.

AVAILABLE ACCESSORIES

- Spring loaded detent (remove foot pedal and adjust spring tension).
- Diameters and capacities other than specified.
- Standard Supports.

HOW TO ORDER

HOW TO ORDER

LPTG19 - BF - DIA - EE - RLBRG - ROLCOV - FINISH
 EXAMPLE LPTG19-29-36-11.25-A20-V98-P94

LPTG25 - BF - DIA - EE - RLBRG - ROLCOV - FINISH
 EXAMPLE LPTG25-29-36-11.25-A50-V98-P94

Our Vision: To be the finest conveyor distributor in the hearts and minds of the people we serve.



7-138 Anderson Avenue, Markham, L6E 1A4
 Phone: 905-471-0420, Fax: 905-471-6617
 Email: sales@mckessockconveyors.com
 www.mckessockconveyors.com

