



The **Medium Duty Belt Curve** Conveyor can be used for many applications. It can be used for packing, sorting, inspecting and assembly line operations.

EFFECTIVE WIDTH	BELT WIDTH	FRAME WIDTH	INSIDE RADIUS	CENTERLINE RADIUS	OUTSIDE RADIUS	WEIGHT		
						45	90	180
10"	11.75"	15.50"	35"	40"	45"	272	337	564
12"	13.75"	17.50"	33"	39"		278	345	579
14"	15.75"	19.50"	31"	38"		283	353	593
16"	17.75"	21.50"	29"	37"		288	361	608
18"	19.75"	23.50"	39"	48"	57"	331	424	731
20"	21.75"	25.50"	37"	47"		341	430	743
22"	23.75"	27.50"	35"	46"		341	438	757
24"	25.75"	29.50"	33"	45"		346	444	739
26"	27.75"	31.50"	55"	68"	81"	498	671	1220
28"	29.75"	33.50"	53"	67"		504	679	1236
30"	31.75"	35.50"	51"	66"		510	688	1251
34"	35.75"	39.50"	47"	64"		521	704	1282
36"	37.75"	41.50"	45"	63"		527	712	1296

STANDARD SPECIFICATIONS

Belt: Standard B98 PVC-120 black, covered one side with clipper lacing. Belt is driven by special chain attached to outside edge of belt.

Belt Widths: Standard widths are listed in table. Also available from 12" to 36" in 1" increments. Please consult factory for widths above 36"

Angles: Standard 90 degree. Also available at 45 degree or 180 degree.

Drive: Standard D93 - end, outside rad., left side. Drive has cast iron worm gear speed reducer with Standard M99 1/2 H.P. 230/460 volt TEFC motor.

Bearings: Sealed pre-lubricated, cast iron flange ball bearings.

Bed: 7-1/4" deep x 1/8" formed steel slider.

Speed: Standard 60 feet per minute. Also available from 3 to 100 fpm.

Drive Pulley: Nominal 4" dia. tapered Pulley with 1-3/16" dia. shaft. Mounted in 3 bolt flange bearings.

Take-up Pulley: Nominal 4" dia. tapered Pulley with 1-3/16" dia. shaft. Mounted in 3 bolt flange bearings.

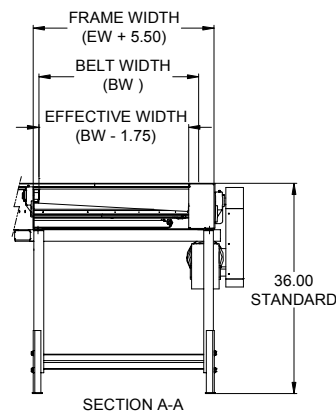
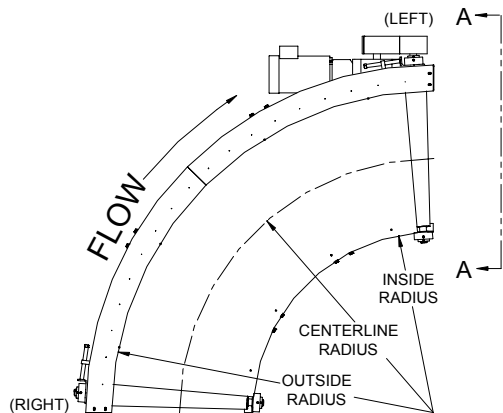
Return Rollers: 1.9" dia., 16 ga. wall tubes with 7/16" hex cold rolled steel axle cotter pin retained. Standard A11 bearings are grease packed.

Supports: SPHH style adjustable set for a Standard 36" top of conveyor located on nominal 10' centers. Also available from 7.5" to 42" top of belt at no additional charge.

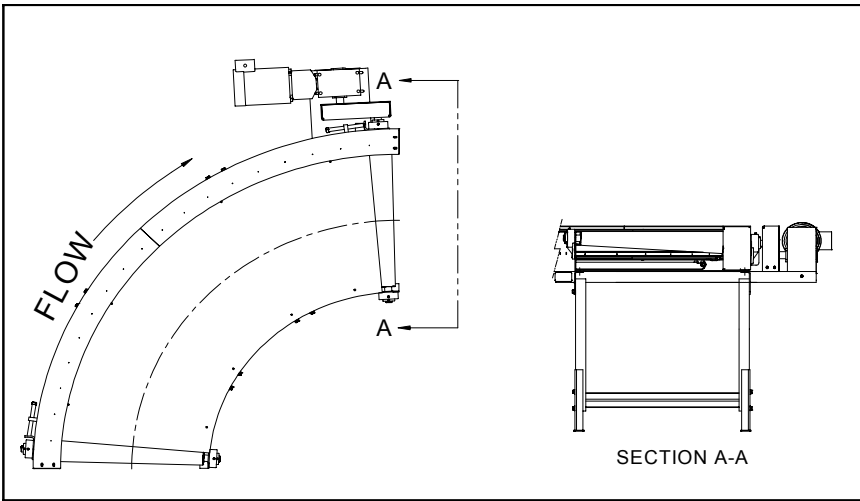
Guardrail: Standard G99: No guard rail.

Finish: P94, Safety Blue Epoxy Powder Coat.

STANDARD D93 - END, OUTSIDE RAD., LEFT SIDE

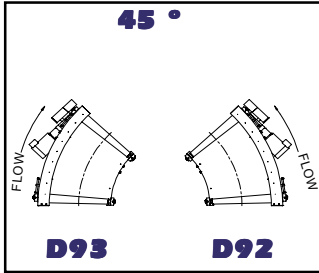
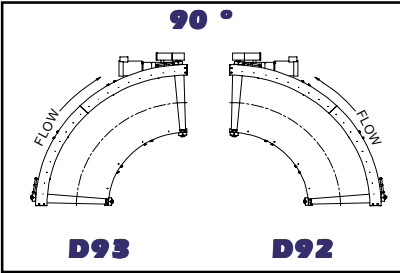
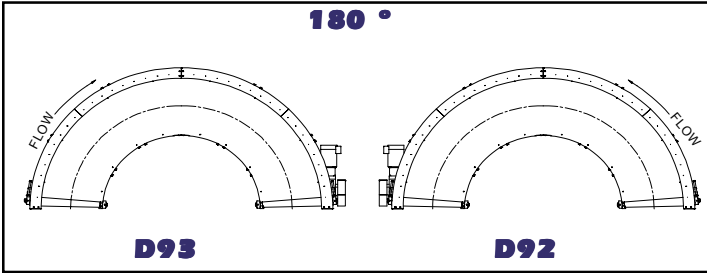


D92 - END, OUTSIDE RAD., RIGHT SIDE



D90 - Side, Outside Rad., Right Hand

D91 - Side, Outside Rad., Left Hand



MOTOR SECTION CHART					
Horizontal MDBC @ 60 FPM					
H.P.	1/2	3/4	1	1-1/2	2
Total Load (Lbs.)	400	575	725	1,100	1,300

OPTIONAL COMPONENTS	
BELT	B98 ; B01, B02, B03, B04, B05, B06, B99
DRIVE	D92 ; D90, D91, D93
GUARD RAIL	G99 ;
MOTOR	M99 ; M01, M02, M03, M04, M05, M06, M07, M08, M09, M10, M11, M12, M13, M14, M15, M16, M17, M19, M20, M21, M22, M23, M24, M25, M26, M27, M30, M31, M32, M33, M34, M97, M98
ROLLER BEARING	A11 ; A13, A18, A21, A23, A31, A33
SUPPORT CENTER	SCC10 ; SCC0, SCC5
FINISH	P94 ; P09, P11, P24, P45, P95, P99

*For descriptions of **OPTIONAL COMPONENTS** see pages 170-176.

AVAILABLE ACCESSORIES

- Electrical Controls: magnetic starter, combination starter, DC variable speed drives. Lanyard emergency switch, photo-eye and various part sensors.
- Top of belt heights can be above listed range please specify when ordering.
- Stainless steel construction.

HOW TO ORDER
MDBC - BW - DEG - SP - BE - EE - BELT - DRIVE - GDRAIL - MOTOR - RLBRG - SUPCC FINISH
EXAMPLE: MDBC-4-90-60-36-36-B98-D92-G99-M99-A11-SCC5-P94



Our Vision: To be the finest conveyor distributor in the hearts and minds of the people we serve.

7-138 Anderson Avenue, Markham, L6E 1A4
 Phone: 905-471-0420, Fax: 905-471-6617
 Email: sales@mckessockconveyors.com
 www.mckessockconveyors.com

