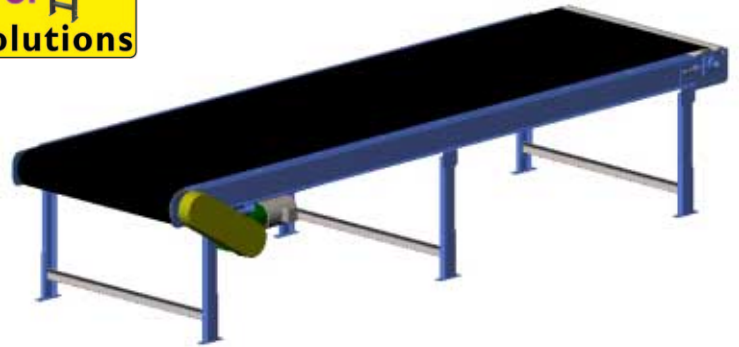




The **MEDIUM DUTY CHANNEL SLIDER BED "WIDE"** is constructed with channel side frames. This construction is well suited to wide belt applications.



STANDARD SPECIFICATIONS

Beltting: Standard B98 PVC-120 black, covered one side. Belt is shipped laced and installed on conveyors up to 10' long. On all other conveyors the belt is shipped loose with lacing installed for field installation.

Belt Widths: Standard widths are 42", 48", 54", 60", 66", and 72". Also available from 42" to 72" in 1" increments.

Lengths: Minimum of 3 times the belt width up to 100' in even inch increments.

Drive: Standard D46 - end, right hand side, 8" pulley. Drive has cast iron worm gear speed reducer with Standard M03 3/4 HP 230/460 bolt TEFC motor.

Speed: Standard 60 feet per minute standard. Also available from 3 to 150 fpm.

Bearings: Sealed pre-lubricated, cast iron flange ball bearings.

Frame: 6-1/2" x 1-1/2" x 1/8" formed steel channel with 1/8" formed bed pan.

Drive Pulley: 8" dia. with 1-7/16" dia. shaft, crowned and lagged. Mounted in 2 bolt flange bearings.

Take-up Pulley: 6" dia. with 1-7/16" dia. shaft, crowned and lagged. Mounted in 2 bolt flange bearings.

Return Rollers: 2.5" dia., 11 ga. wall tubes with 11/16" hex cold rolled steel axle, spring retained. Standard A51 bearings are grease packed.

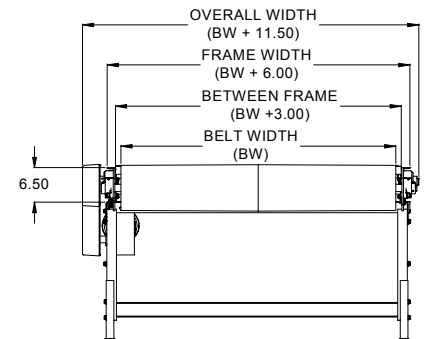
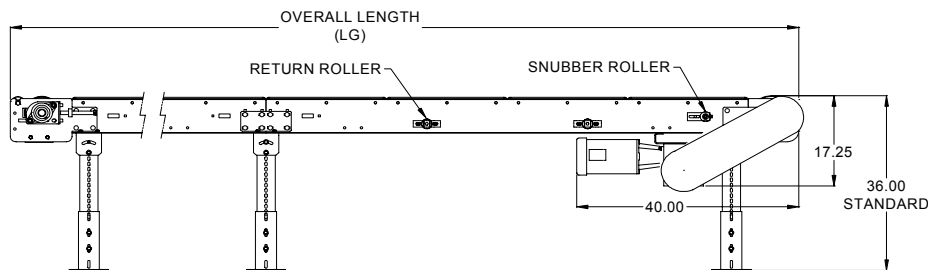
Snubber Roller: Standard 1.9 dia. 12 ga. wall tubes with 7/16" hex cold rolled steel axle, spring retained. Standard A23 bearings are grease packed with front and back seals. 2.5 dia. 11 ga. wall tubes with 11/16" hex cold rolled steel axle, spring retained. Standard A55 bearings are grease packed with front and back seals. Used on conveyors with D42 & D43 Center drive Option.

Supports: SPH style adjustable set for a Standard 36" top of conveyor located on nominal 10' centers. Also available from 7.5" to 42" top of belt at no additional charge.

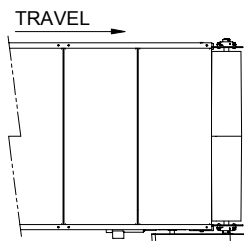
Guard Rail: Standard G99: No guard rail.

Finish: Standard P94: Safety Blue.

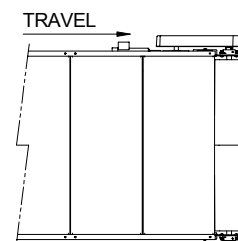
STANDARD D46 - END, RIGHT HAND SIDE, 8"



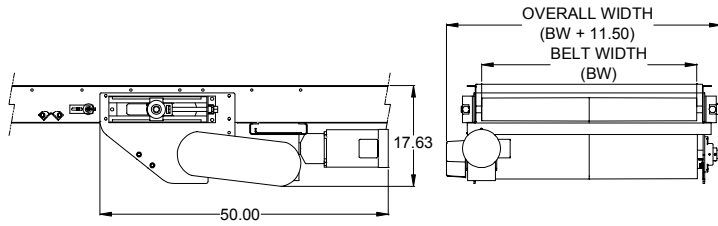
DRIVE OPTIONS



STANDARD D46 - END, RIGHT HAND SIDE, 8" PULLEY

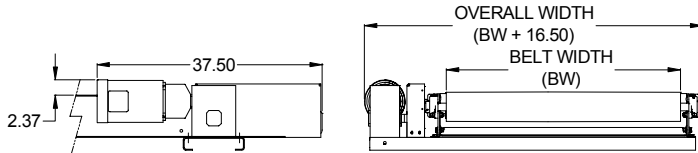


D41 - END, LEFT HAND SIDE, 8" PULLEY



D42 - CENTER, RIGHT HAND, HEAVY DUTY

D43 - CENTER, LEFT HAND, HEAVY DUTY



D44 - SIDE, RIGHT HAND, 8" PULLEY

D45 - SIDE, LEFT HAND, 8" PULLEY

MOTOR SELECTION CHART

Horizontal MDCSW @ 60 FPM

H.P.	3/4	1	1-1/2	2
Total Load (Lbs.)	575	725	1100	1300

OPTIONAL COMPONENTS

BELT DRIVE	B98 ; B01, B02, B03, B04, B05, B0B, B97, B99
GUARD RAIL	D46 ; D41, D42, D43, D44, D45
MOTOR	G99 ; G31, G32, G33, G34, G35, G36, G37, G38, G39, G40, G82 M03 ; M01, M02, M04, M05, M06, M07, M08, M09, M10, M11, M12, M13, M14, M15, M16, M17, M18, M19, M20, M21, M22, M23, M24, M25, M26, M27, M28, M29, M30, M31, M32, M33, M34, M35, M36, M98
ROLLER BEARING SUPPORT CENTER	A51 ; A53, A55, A60
FINISH	SCC10 ; SCC0, SCC5 P94 ; P09, P11, P24, P45, P95

*For descriptions of **OPTIONAL COMPONENTS** see pages 170-176.

AVAILABLE ACCESSORIES

- Electrical Controls: magnetic starter, combination starter, DC variable speed drives. Lanyard emergency switch, photo-eye and various part sensors.
- Side Tables: One or both sides.
- Stainless steel construction.

HOW TO ORDER

MDCSW - BW - LG - SP - BE - EE - BELT - DRIVE - GDRAIL -MOTOR - RLBRG - SUPCC - FINISH

EXAMPLE: MDCSW-42-120-60-36-36-B98-D46-G99-M03-A51-SCC10-P94



Our Vision: To be the finest conveyor distributor in the hearts and minds of the people we serve.

7-138 Anderson Avenue, Markham, L6E 1A4
 Phone: 905-471-0420, Fax: 905-471-6617
 Email: sales@mckessockconveyors.com
 www.mckessockconveyors.com

