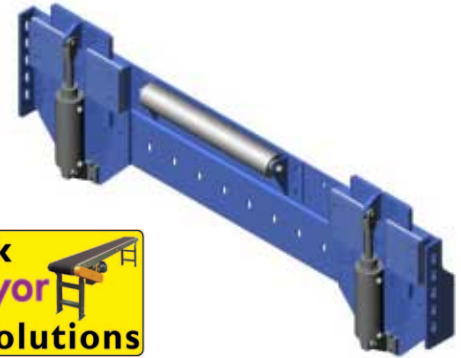


The Pop-Up Blade Stop can be used to hold product on a gravity conveyor line prior to a work area. It can also be used with an RB or RBB roller brake as part of an escapement mechanism. Maximum container weight 1500 lbs.

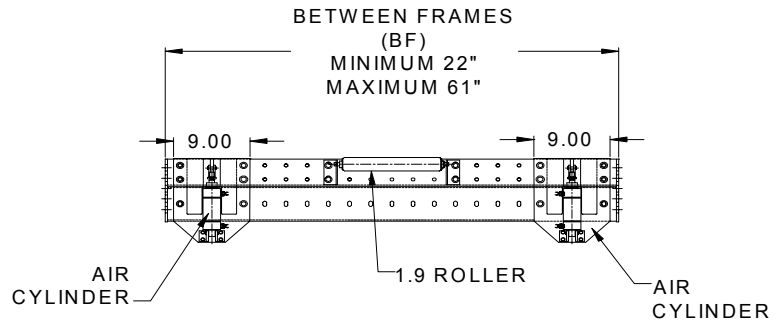
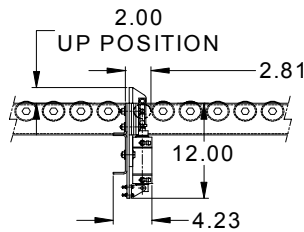
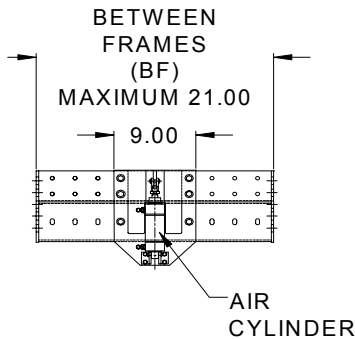


STANDARD SPECIFICATIONS

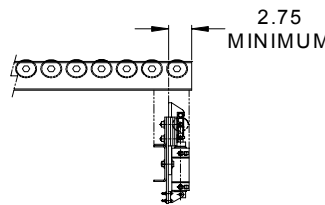
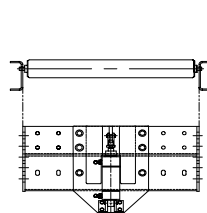
Frame: Formed 3/16" steel members welded together with 1/4" end plates.	Cylinder PUBS1: (1) Double acting 2" bore x 2" stroke pneumatic cylinder.
Widths: Available from 12" to 21" between frames for PUBS1 and 22" to 61" for PUBS2.	Cylinder PUBS2: (2) Double acting 2" bore x 2" stroke pneumatic cylinders.
Blade Stop: 3/8" plate connected to air cylinders.	Finish: Standard P94; Safety Blue, Epoxy Powder Coat.

PUBS1: POP-UP BLADE STOP SINGLE BLADE

PUBS2: POP-UP BLADE STOP DUAL BLADE



MOUNTS BETWEEN FRAME TO EXISTING CONVEYOR



* Mounting hardware included.

* May require field drilling.
* May require removal of rollers.

OPTIONAL COMPONENTS

FINISH	P94; P45, P95
---------------	----------------------

*For descriptions of **OPTIONAL COMPONENTS** see pages 170-176.

AVAILABLE ACCESSORIES

• Manual valve mounted on stand or Electrical solenoid valve mounted on stand.

HOW TO ORDER

PUBS1 - BF - FINISH
PUBS2 - BF - FINISH

EXAMPLE: PUBS1-13-P94
EXAMPLE: PUBS2-22-P94