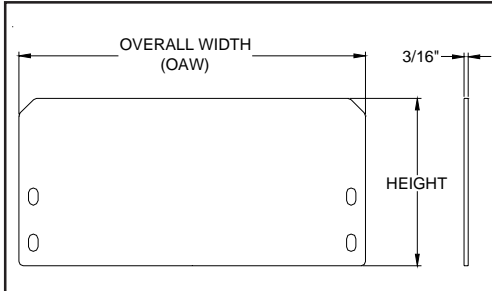


END STOPS

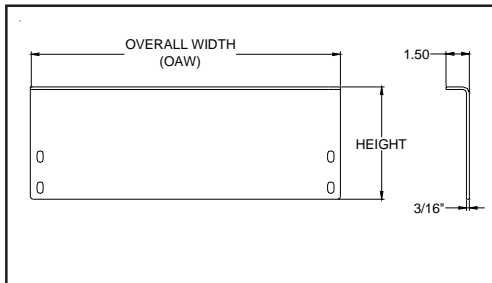
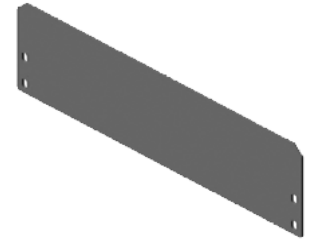
STANDARD SPECIFICATIONS

Material: 3/16" or 3/8" steel. Reference individual model drawings
Finish: Standard P94: Safety Blue, Epoxy Powder Coat.



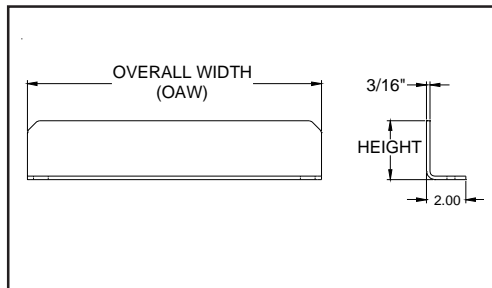
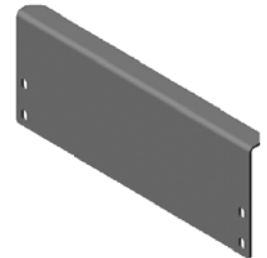
Model No.	Frame	Height	Overall Width	Width Range
END1	F97	7.00	BF+3.00	9.00 to 54.00
END1	F96	7.25	BF+3.00	9.00 to 64.00

Used with 1900, 2500 and 2600 series gravity



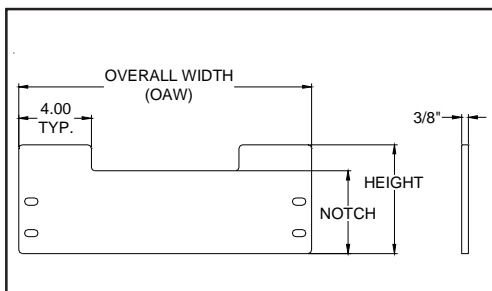
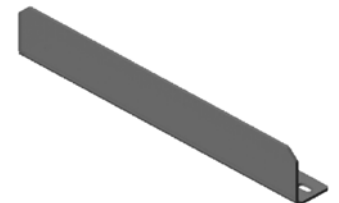
Model No.	Frame	Height	Overall Width	Width Range
END2	F97	7.00	BF+3.00	9.00 to 54.00
END2	F96	7.25	BF+3.00	9.00 to 64.00

Used with 1900, 2500 and 2600 series gravity



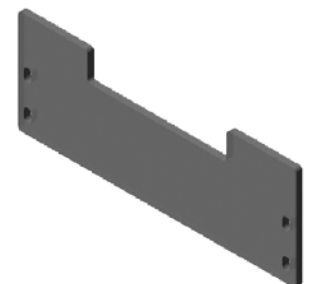
Model No.	Frame	Height	Overall Width	Width Range
END3	F98	3.00	BF+2.00	8.00 to 24.00
END3	F97	3.00	BF+3.00	9.00 to 54.00
END3	F96	3.00	BF+3.00	9.00 to 64.00

Used with 1400, 1900, 2500 and 2600 series gravity



Model No.	Frame	Height	Notch	Overall Width	Width Range
END5	F94	6.00	4.56	BF+3.16	17.16 to 46.16
END5	F95	7.12	5.50	BF+3.50	17.50 to 46.50
END5	F96	6.00	4.37	BF+3.00	17.00 to 46.00

Used with 2500, 2600 and 3500 series gravity



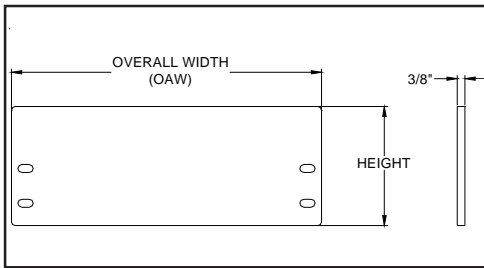
Specifications are subject to change without notice.

Our Vision: To be the finest conveyor distributor in the hearts and minds of the people we serve.



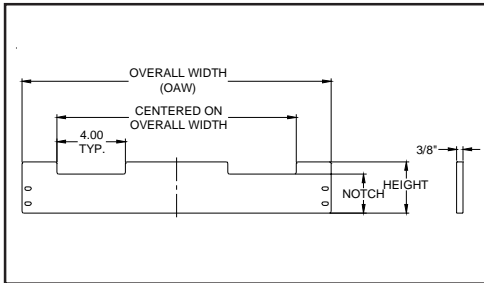
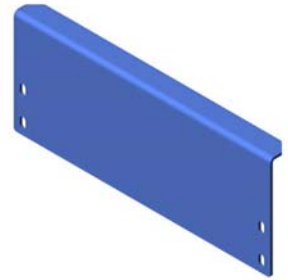
7-138 Anderson Avenue, Markham, L6E 1A4
 Phone: 905-471-0420, Fax: 905-471-6617
 Email: sales@mckessockconveyors.com
 www.mckessockconveyors.com





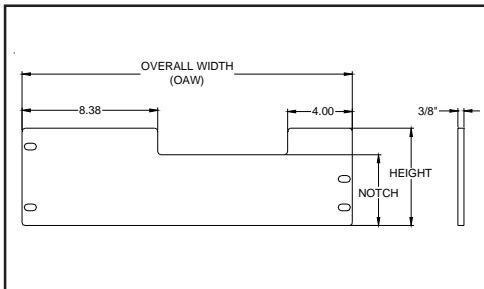
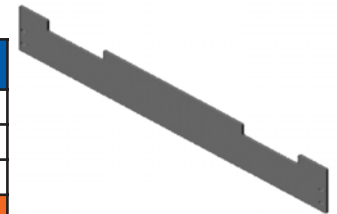
Model No.	Frame	Height	Overall Width	Width Range
END6	F94	6.00	BF+3.16	9.16 to 64.18
END6	F95	7.12	BF+3.50	9.50 to 64.50
END6	F96	6.00	BF+3.00	9.00 to 64.00

Used with 2500, 2600 and 3500 series gravity



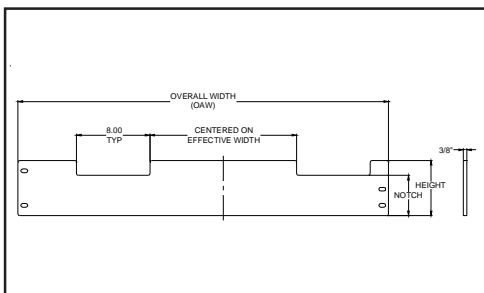
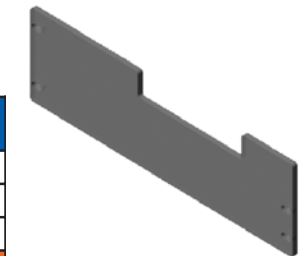
Model No.	Frame	Height	Notch	Overall Width	Width Range
END7	F94	6.00	4.56	BF+3.16	46.16 to 64.18
END7	F95	7.12	5.50	BF+3.50	46.50 to 64.50
END7	F96	6.00	4.37	BF+3.00	46.00 to 64.00

Used with 2500, 2600 and 3500 series gravity



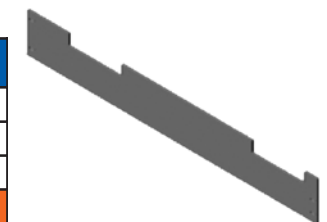
Model No.	Frame	Height	Notch	Overall Width	Width Range
END8	F23	6.00	3.62	EW +7.37	21.37 to 50.37
END8	F25	5.00	4.37	EW +7.37	21.37 to 50.37
END8	F27	8.00	6.50	EW +8.62	22.62 to 51.62

Used with CDLR19, CDLR25, CDLR26, and CDLR35



Model No.	Frame	Height	Notch	Overall Width	Width Range
END9	F23	6.00	3.62	EW +7.37	50.37 to 68.37
END9	F25	5.00	4.37	EW +7.37	50.37 to 68.37
END9	F27	8.00	6.50	EW +8.62	51.62 to 69.62

Used with CDLR19, CDLR25, CDLR26, and CDLR35



OPTIONAL COMPONENTS

*For descriptions see OPTIONAL COMPONENTS section.

FINISH PP94; PP45, PP95

HOW TO ORDER

PART NO. - FRAME - OAW - FINISH

EXAMPLE: CVP0389-F97-24-PP94

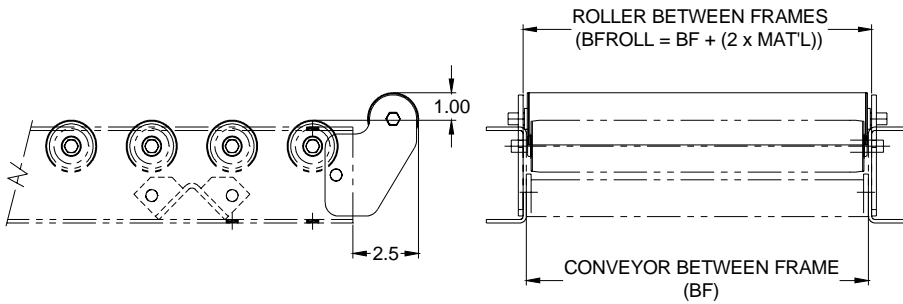
Specifications are subject to change without notice.

Our Vision: To be the finest conveyor distributor in the hearts and minds of the people we serve.



7-138 Anderson Avenue, Markham, L6E 1A4
 Phone: 905-471-0420, Fax: 905-471-6617
 Email: sales@mckessockconveyors.com
 www.mckessockconveyors.com





Model No.	END414
Used with 1418 series gravity	

OPTIONAL COMPONENTS	
ROLLER BEARING	A02;
ROLL COVER	V98; V40
FINISH	PP94; PP41

Model No.	END419
Used with 1900 series gravity	

OPTIONAL COMPONENTS	
ROLLER BEARING	A10; A11, A12, A13, A18, A20, A21, A22, A23, A30, A31, A32, A33, A40, A41
ROLL COVER	V98; V41
FINISH	PP94; PP09, PP11, PP24, PP45, PP95, PP96, PP95, *Custom Colors Available

Model No.	END425
Used with 2500 series gravity	

OPTIONAL COMPONENTS	
ROLLER BEARING	A50; A51, A52, A53, A54, A55, A58, A59, A60, A61, A62
ROLL COVER	V98; V42, V73
FINISH	PP94; PP09, PP11, PP24, PP45, PP95, PP96, PP99, *Custom Colors Available

Model No.	END426
Used with 2600 series gravity	

OPTIONAL COMPONENTS	
ROLLER BEARING	A50; A51, A52, A53, A54, A55, A58, A59, A60, A61, A62
ROLL COVER	V98; V42,
FINISH	PP94; PP09, PP11, PP24, PP45, PP95, PP96, PP98, *Custom Colors Available

HOW TO ORDER

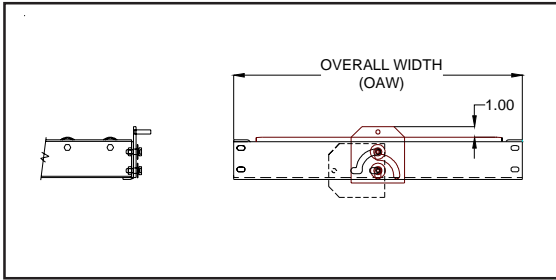
*For descriptions see OPTIONAL COMPONENTS section.

MODEL - BFROLL - ROLLER BEARING - ROLLER COVER - FINISH

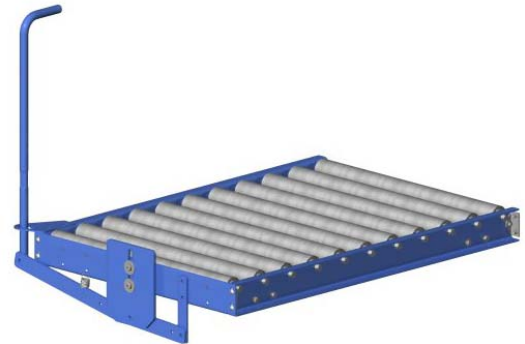
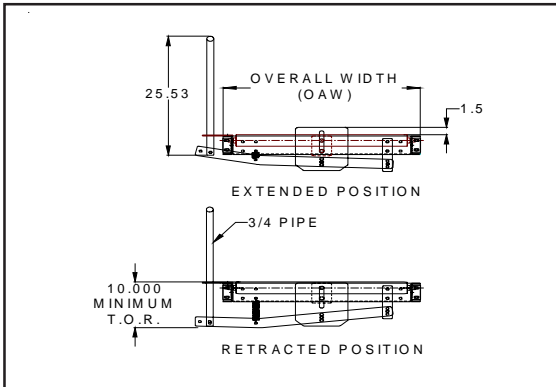
EXAMPLE: END419-21.25-A10-V98-PP94

Specifications are subject to change without notice.

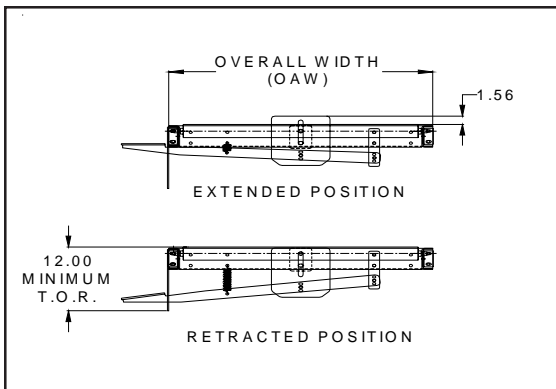
Our Vision: To be the finest conveyor distributor in the hearts and minds of the people we serve.



Model No.	END12
Used with 1900, 2500, and 2600 series gravity	



Model No.	END14
Used with 1900, 2500, and 2600 series gravity	



Model No.	END16
Used with 1900, 2500 and 2600 series gravity	

OPTIONAL COMPONENTS

*For descriptions see OPTIONAL COMPONENTS section.

FRAME	F96; F94, F95, F97
FINISH	PP94; PP09, PP11, PP24, PP45, PP95, PP96, PP98 , *Custom Colors Available

HOW TO ORDER

MODEL - FRAME - OAW - FINISH

EXAMPLE: END14-F97-24-PP94

Specifications are subject to change without notice.



7-138 Anderson Avenue, Markham, L6E 1A4
 Phone: 905-471-0420, Fax: 905-471-6617
 Email: sales@mckessockconveyors.com
 www.mckessockconveyors.com

