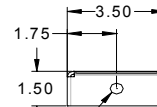
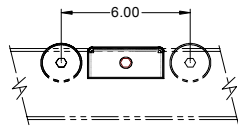


STANDARD SPECIFICATIONS

Material: 1/8" formed steel channel with integral butt couplers. **Finish:** Standard P94: Safety Blue, Epoxy Powder Coat.
Between Frame: 6" to 51" in 1" increments"

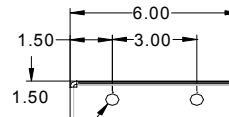
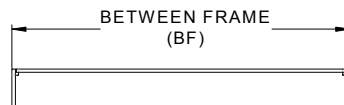
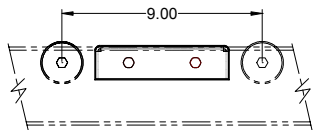
Model No.	19WP1
Used with 1900 series gravity	



7/16" MOUNTING HOLES



Model No.	19WP2
Used with 1900 series gravity	



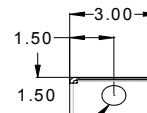
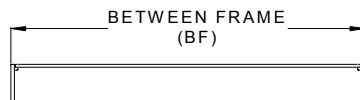
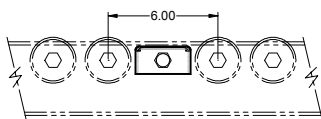
7/16" MOUNTING HOLES



STANDARD SPECIFICATIONS

Material: 3/16" formed steel channel with integral butt couplers. **Finish:** Standard P94: Safety Blue, Epoxy Powder Coat.
Between Frame: 6" to 61" in 1" increments"

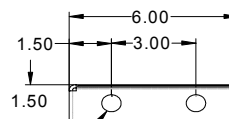
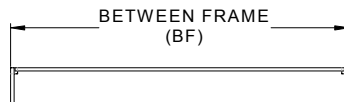
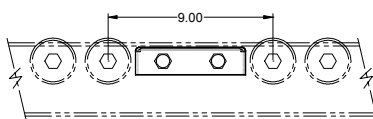
Model No.	25WP1
Used with 2500 and 2600 series gravity	



11/16" MOUNTING HOLES



Model No.	25WP2
Used with 2500 and 2600 series gravity	



11/16" MOUNTING HOLES



* Mounting hardware included.

* May require field drilling.

OPTIONAL COMPONENTS

Finish P94; P45, P95

*For descriptions of **OPTIONAL COMPONENTS** see pages 170-176.

HOW TO ORDER

MODEL - BF - FINISH

EXAMPLE: 25WP2-36-P94